

APPROVALS

Table with columns: LINE TABLE (LINE, AZIMUTH, DISTANCE) and CURVE TABLE (CURVE, RADIUS, POINT, RADIUS, ARC, CHORD, AZIMUTH). It contains detailed survey data for various points and curves.

LEGEND table with columns: DESCRIPTION, SYMBOL, DESCRIPTION, SYMBOL. It lists various survey symbols and their corresponding descriptions.

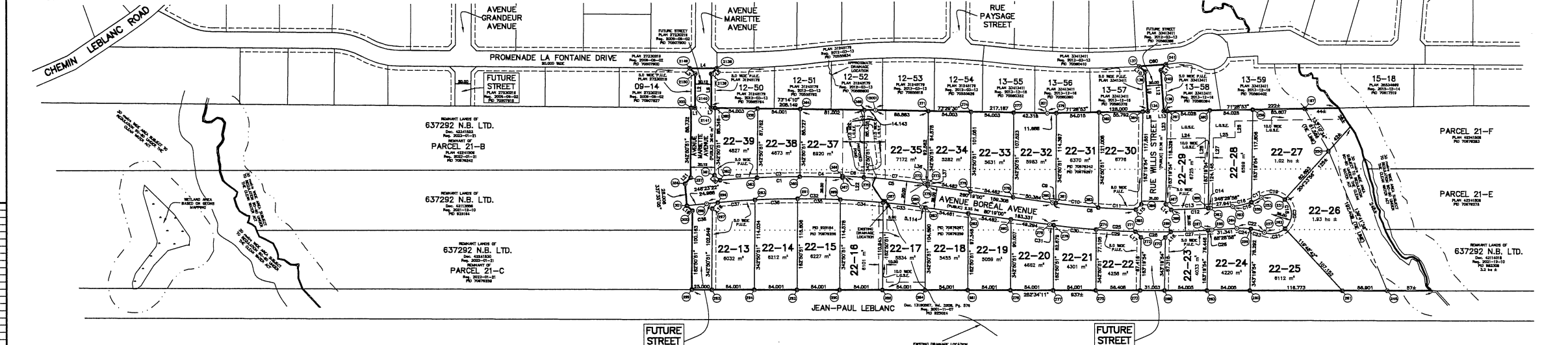
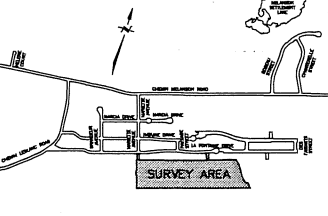


Table listing lot numbers (134-301) and their corresponding N.B. Grid Coordinate Values (Easting and Northing).

UTILITIES APPROVAL

OWNER'S STATEMENT

DOCUMENTS

PURPOSE OF PLAN

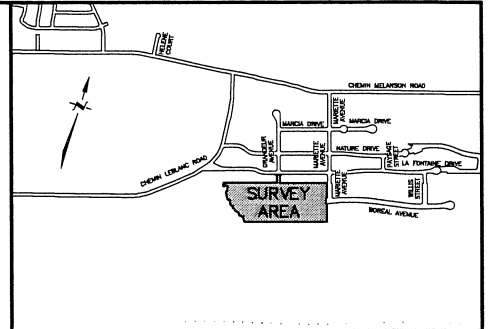
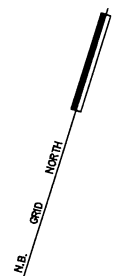
NOTES

Professional stamps and seals including 'wsp' (Surveyor's Statement), 'T.M. KEMVE' (Validation Seal), and 'A.M.B.L.S.' (Professional Engineer Seal).

N.B. GRID COORDINATE VALUES. ALL COMPUTATIONS PERFORMED AND COORDINATES SHOWN ON THIS PLAN ARE BASED ON THE NEW BRUNSWICK TERRITORY-WIDE DOUBLE PROJECTION AND HAZED (GMS) AS REALIZED BY SERVICE NEW BRUNSWICK'S HIGH PRECISION NETWORK ACTIVE CONTROL SYSTEM.

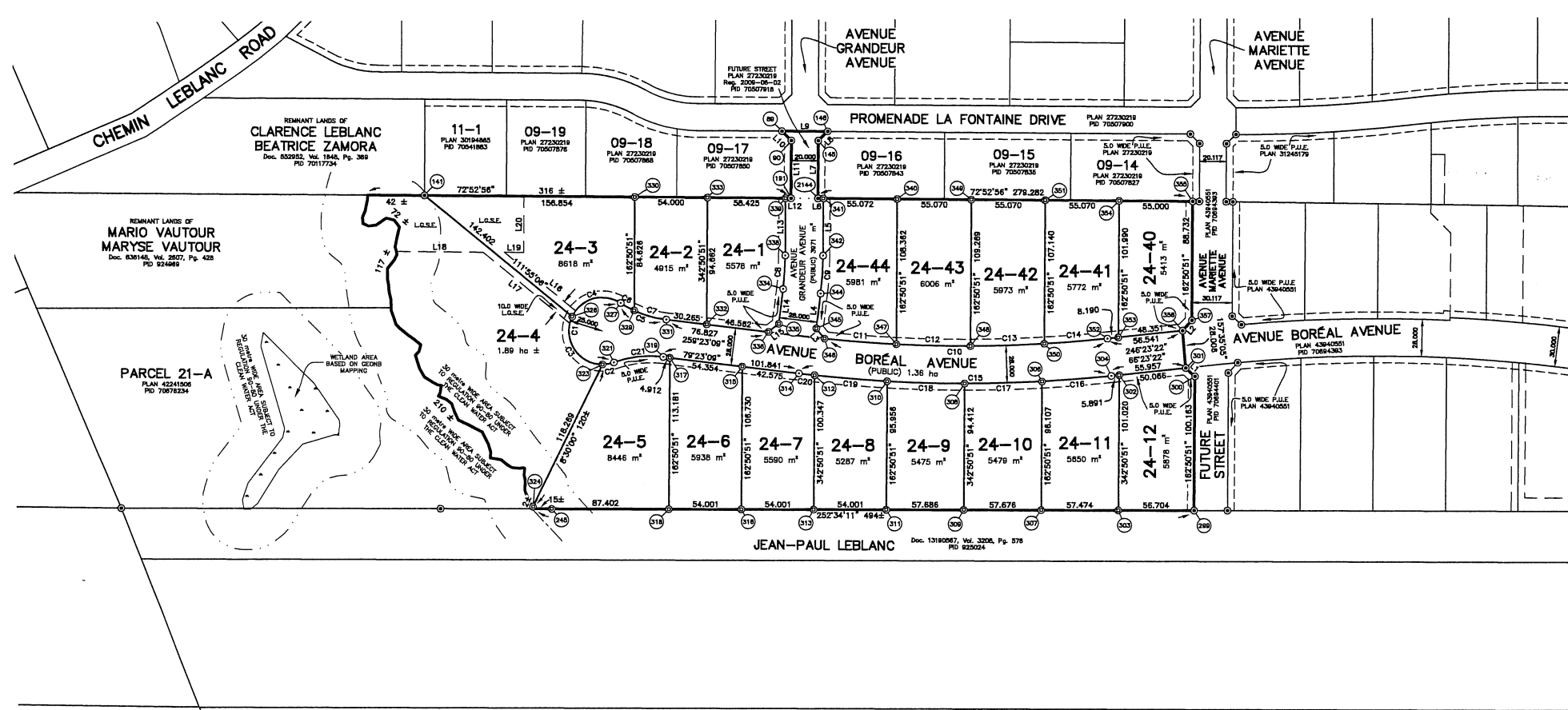
APPROVALS

CURVE TABLE						LINE TABLE		
CURVE	RADIUS POINT	RADIUS	ARC	CHORD	AZIMUTH	LINE	AZIMUTH	DISTANCE
C1	322	25.000	101.629	44.763	169°02'40"	L1	294°37'07"	9.326
C2	322	25.000	8.663	8.620	62°30'47"	L2	204°37'07"	10.441
C3	322	25.000	50.297	42.233	130°04'38"	L3	303°37'21"	9.767
C4	322	25.000	42.669	37.675	236°36'31"	L4	348°23'09"	26.252
C5	328	80.000	36.467	36.152	92°26'41"	L5	162°50'51"	42.680
C6	328	80.000	11.635	11.525	101°22'23"	L6	252°52'56"	4.000
C7	328	80.000	24.832	24.832	88°18'51"	L7	342°50'53"	43.047
C8	337	220.000	26.105	25.062	186°07'00"	L8	207°50'47"	9.895
C9	337	248.000	28.301	28.285	346°07'00"	L9	252°50'52"	34.000
C10	305	1000.000	210.967	210.576	252°28'00"	L10	117°51'06"	9.800
C11	305	1000.000	53.841	53.635	78°56'25"	L11	162°50'48"	43.034
C12	305	1000.000	55.085	55.078	73°48'32"	L12	252°52'56"	4.000
C13	305	1000.000	55.117	55.110	72°40'07"	L13	162°50'51"	42.688
C14	305	1000.000	47.124	47.119	67°44'22"	L14	169°23'09"	26.252
C15	305	1028.000	233.182	232.882	72°53'16"	L15	214°38'03"	9.858
C16	305	1028.000	51.823	51.818	67°50'01"	L16	111°55'06"	68.680
C17	305	1028.000	57.717	57.709	70°55'11"	L17	281°55'06"	53.804
C18	305	1028.000	57.707	57.699	74°05'10"	L18	202°52'56"	54.599
C19	305	1028.000	54.164	54.158	77°13'14"	L19	72°52'56"	14.216
C20	305	1028.000	11.771	11.771	78°03'29"	L20	342°52'56"	42.081
C21	320	80.000	37.420	37.080	65°50'06"			



LEGEND

DESCRIPTION	SYMBOL	DESCRIPTION	SYMBOL
SURVEY SYSTEM COORDINATE MONUMENT	△	FOUND	FL
STANDARD SURVEY MARKER PLACED	⊙	CALCULATED	(s)
STANDARD SURVEY MARKER FOUND	⊗	REGISTERED	Reg.
CALCULATED COORDINATE POINT	⊕	DERIVED FROM A SOURCE OTHER THAN THE SURVEYOR'S MEASUREMENTS	(d)
TABULATED COORDINATE REFERENCE	⊖	NBLS REGISTRATION NUMBER	#384
SCRIBED WOODEN SURVEY POST	⊠	SQUARE METRE(S)	m ²
WOODEN SURVEY POST	⊡	MILLIMETRE(S)	mm
SQUARE IRON BAR FOUND	■	HECTARE	ha
IRON PIPE FOUND	⊚	RADIUS	r
ROUND IRON BAR FOUND	⊙	DERIVED FROM PLAN	(plan)
WELL	⊕	NEW BRUNSWICK LAND SURVEYOR	NBLS
DISTANCE/AZIMUTH CALLED FOR IN Doc.	(doc)	CERTIFICATE OF REGISTERED OWNERSHIP	CRO
PUBLIC UTILITY EASEMENT	P.U.E.	SERVICE NEW BRUNSWICK	SNB
LOCAL GOVERNMENT SERVICES EASEMENT	L.G.S.E.	DOCUMENT / VOLUME / PAGE	Doc./Vol./Pg.
EASEMENT(S) SHOWN THUS	—	BARCEL IDENTIFIER	PID
LANDS DEALT WITH BY THIS PLAN	OR	ORDINARY HIGH WATER MARK	—o—h—m—
		CIVIC NUMBERS PROVIDED BY THE MUNICIPALITY	(32)



NO ONE MAY COPY, REPRODUCE, DISTRIBUTE OR SELL THE PLAN WITHOUT THE PERMISSION OF WSP © 2024

89	2841516.893	7454189.160
90	2841525.446	7454184.536
141	2841276.965	7454062.979
145	2841544.557	7454180.434
146	2841549.181	7454189.167
191	2841538.138	7454143.415
245	2841437.726	7453988.278
289	2841894.678	7454011.743
305	2841865.739	7454107.452
301	2841856.660	7454111.337
302	2841810.786	7454021.285
303	2841840.578	7453994.758
304	2841805.388	7454088.920
305	2841393.657	7455030.871
306	2841757.400	7454089.375
307	2841785.743	7453977.542
308	2841702.872	7454050.478
309	2841730.715	7453980.285
310	2841647.382	7454034.855
311	2841676.878	7453942.986
312	2841594.563	7454022.894
313	2841824.157	7453928.810
314	2841583.008	7454020.480
315	2841541.160	7454012.618
316	2841572.636	7453910.634
317	2841487.736	7454002.606
318	2841521.115	7453894.459
319	2841482.808	7454001.701
320	2841487.643	7453923.070
321	2841448.037	7453986.811
322	2841433.848	7454006.468
323	2841441.380	7453982.632
324	2841423.809	7453985.863
326	2841409.074	7454009.823
327	2841440.530	7454030.558
328	2841461.914	7454107.647
329	2841451.828	7454028.285
330	2841428.871	7454109.147
331	2841476.849	7454029.016
332	2841506.396	7454034.590
333	2841478.479	7454125.041
334	2841552.928	7454077.080
335	2841557.764	7454051.277
336	2841552.162	7454043.167
337	2841336.892	7454035.257
338	2841548.907	7454101.439
339	2841534.315	7454142.238
340	2841813.707	7454188.688
341	2841581.075	7454150.478
342	2841573.662	7454109.696
344	2841580.449	7454082.237
345	2841585.285	7454056.434
346	2841593.417	7454051.028
347	2841545.865	7454063.146
348	2841698.563	7454078.488
349	2841656.338	7454182.897
350	2841750.586	7454098.732
351	2841718.968	7454199.107
352	2841794.173	7454114.581
353	2841801.678	7454117.881
354	2841771.599	7454215.315
355	2841824.163	7454231.504
356	2841845.981	7454137.227
357	2841850.331	7454146.719
2144	2841557.252	7454149.301
28155	2828800.997	7456482.126

N.B. GRID COORDINATE VALUES
 ALL COMPUTATIONS PERFORMED AND COORDINATES SHOWN ON THIS PLAN ARE BASED ON THE NEW BRUNSWICK STEREOGRAPHIC DOUBLE PROJECTION AND NAD83 (CSRS) AS REALIZED BY SERVICE NEW BRUNSWICK'S HIGH PRECISION NETWORK ACTIVE CONTROL SYSTEM

UTILITIES APPROVAL
 PURSUANT TO SECTION 5 OF "DESIGNATED EASEMENTS REGULATION" 2021-83, THE PUBLIC UTILITY EASEMENTS ON THIS PLAN VEST IN NEW BRUNSWICK POWER CORPORATION, BELL CANADA, AND ROGERS COMMUNICATION INC., WITH THE FILING OF THIS PLAN.

DOCUMENTS
 PID 70507918
 THE FUTURE STREETS SHOWN ON PLAN 27230219 AND PLAN 33413411 VESTED IN THE PROVINCE OF NEW BRUNSWICK WITH THE FILING OF SAID PLANS.

OWNER'S STATEMENT
 I, THE UNDERSIGNED, DO HEREBY CERTIFY THAT I REPRESENT THE REGISTERED OWNER OF THE PROPERTY BEING SUBDIVIDED HEREON AND DO HEREBY GRANT APPROVAL TO THIS PLAN.

HON. RICHARD AMES
 MINISTER OF TRANSPORTATION AND INFRASTRUCTURE

LOCAL GOVERNMENT SERVICES EASEMENT STATEMENT
 PURSUANT TO SECTION 4 OF "DESIGNATED EASEMENTS REGULATION" 2021-83, THE LOCAL GOVERNMENT SERVICES EASEMENT (L.G.S.E.) ON THIS PLAN VEST IN THE PROVINCE OF NEW BRUNSWICK WITH THE FILING OF THIS PLAN.

OWNER'S STATEMENT
 I, THE UNDERSIGNED, DO HEREBY CERTIFY THAT I REPRESENT THE REGISTERED OWNER OF THE PROPERTY BEING SUBDIVIDED HEREON AND DO HEREBY GRANT APPROVAL TO THIS PLAN.

ANDRÉ GUY SAVOIE - PRESIDENT
 FOR: 637292 N.B. LTD.

WATER QUALITY NOTE
 BASED ON A HYDROGEOLOGICAL STUDY CONDUCTED BY CRAIG HYDROGEOLOGIC DATED MARCH 2021, A RESIDENTIAL WATER TREATMENT UNIT MAY BE REQUIRED TO ENSURE WATER QUALITY WITHIN THE GUIDELINES FOR THE PROTECTION OF CANADIAN DRINKING WATER QUALITY.

THIS NOTE APPLIES TO ALL LOTS SHOWN ON THIS SUBDIVISION PLAN.

DOCUMENTS
 PID 925164
 ANDRÉE BOURQUE AND REJEAN BOURQUE TO 637292 N.B. LTD. DATED 2021-12-09 REGISTERED 2021-12-10 TRANSFER NUMBER 42213556
 CRO DATED: 2023-08-21

PID 70676242
 MARIO CAMILLE VAUTOUR AND MARYSE FERNANDE VAUTOUR TO 637292 N.B. LTD. DATED 2022-01-12 REGISTERED 2022-01-21 TRANSFER NUMBER 42241522
 CRO DATED: 2023-08-21

PURPOSE OF PLAN
 -TO AMEND FUTURE STREET, PLAN 27230219, PID 70507918.
 -TO AMEND PARCELS 21-B (PID 70676242) AND PARCEL 21-C (PID 70676259), PLAN 42241506.
 -TO CREATE LOTS 24-1 TO 24-12 AND 24-40 TO 24-44 FOR RESIDENTIAL BUILDING PURPOSES.
 -TO CREATE AVENUE BORÉAL AVENUE (PUBLIC) AND AVENUE GRANDEUR AVENUE (PUBLIC), AS PURSUANT TO 88(6)(a) OF THE COMMUNITY PLANNING ACT, 2017.
 -TO CREATE PUBLIC UTILITY EASEMENTS (P.U.E.) SHOWN THUS —, PURSUANT TO SECTION 5, REGULATION 2021-83, OF THE COMMUNITY PLANNING ACT.
 -TO CREATE LOCAL GOVERNMENT SERVICES EASEMENTS (L.G.S.E.), SHOWN THUS —, PURSUANT TO SECTION 4, REGULATION 2021-83, OF COMMUNITY PLANNING ACT.

PID 70676259
 637292 N.B. LTD. TO 637292 N.B. LTD. DATED 2022-01-12 REGISTERED 2022-01-21 TRANSFER NUMBER 42241530
 CRO DATED: 2023-08-21

NOTES
 -DIRECTIONS ARE N.B. GRID AZIMUTHS DERIVED FROM THE SERVICE NEW BRUNSWICK'S HIGH PRECISION NETWORK ACTIVE CONTROL SYSTEM.
 -THE SCALE FACTOR USED WAS 1.000043.
 -THE DOCUMENT NUMBERS REFERRED TO ON THIS PLAN ARE THOSE OF THE COUNTY REGISTRY OFFICE AND NOT THE PROVINCIAL LAND REGISTRATION OFFICE FOR THE DISTRICT OF NEW BRUNSWICK.
 -ADJACENT OWNER INFORMATION OBTAINED FROM SNB RECORDS.
 -ALL DISTANCES SHOWN ARE CALCULATED GRID DISTANCES.
 -CERTIFICATION IS NOT MADE AS TO LEGAL TITLE, BEING THE DOMAIN OF A LAWYER, NOR TO THE ZONING & SETBACK BY-LAWS OR REGULATIONS, BEING THE DOMAIN OF A DEVELOPMENT OFFICER.
 -CERTIFICATION IS NOT MADE AS TO COVENANTS SET OUT IN THE DOCUMENT(S) AND THE LOCATION OF ANY UNDERGROUND SERVICES AND OR FIXTURES, PERMANENT OR OTHERWISE.
 -FIELD SURVEY WAS COMPLETED SEPTEMBER 25, 2024.

AMENDING SUBDIVISION PLAN:
DOMAINE BORÉAL SUBDIVISION
UNIT 2
 AMENDING DOMAINE NATURE ESTATES SUBDIVISION PLAN 27230219 AMENDING DOMAINE BORÉAL ESTATES SUBDIVISION PLAN 42241506 SITUATED ON THE SOUTH SIDE OF PROMENADE LA FONTAINE DRIVE AND AT THE WEST END OF AVENUE BORÉAL AVENUE, CITY OF DIEPPE (GREATER LAKEBURN), PARISH OF MONCTON, COUNTY OF WESTMORLAND, PROVINCE OF NEW BRUNSWICK

SCALE 1:2000

wsp 1070 ST. GEORGE BOULEVARD, SUITE 100
 MONCTON, NEW BRUNSWICK
 CANADA, E1E 6C7
 PHONE: 506 851-1675
 WWW.WSP.COM

SURVEYOR'S STATEMENT
 I HEREBY CERTIFY THAT THIS PLAN IS CORRECT.

VALIDATION SEAL
 No. 232467

BRANDON H. MACDONALD
 SIGNATURE
 2024-10-01
 DATE

DRAWN: HJB FIELD: SGD/WGT CHECKED: BMM
 JOB: 201-12202 CAD: 201-12202-625