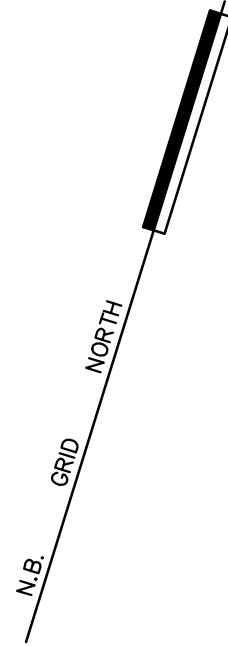
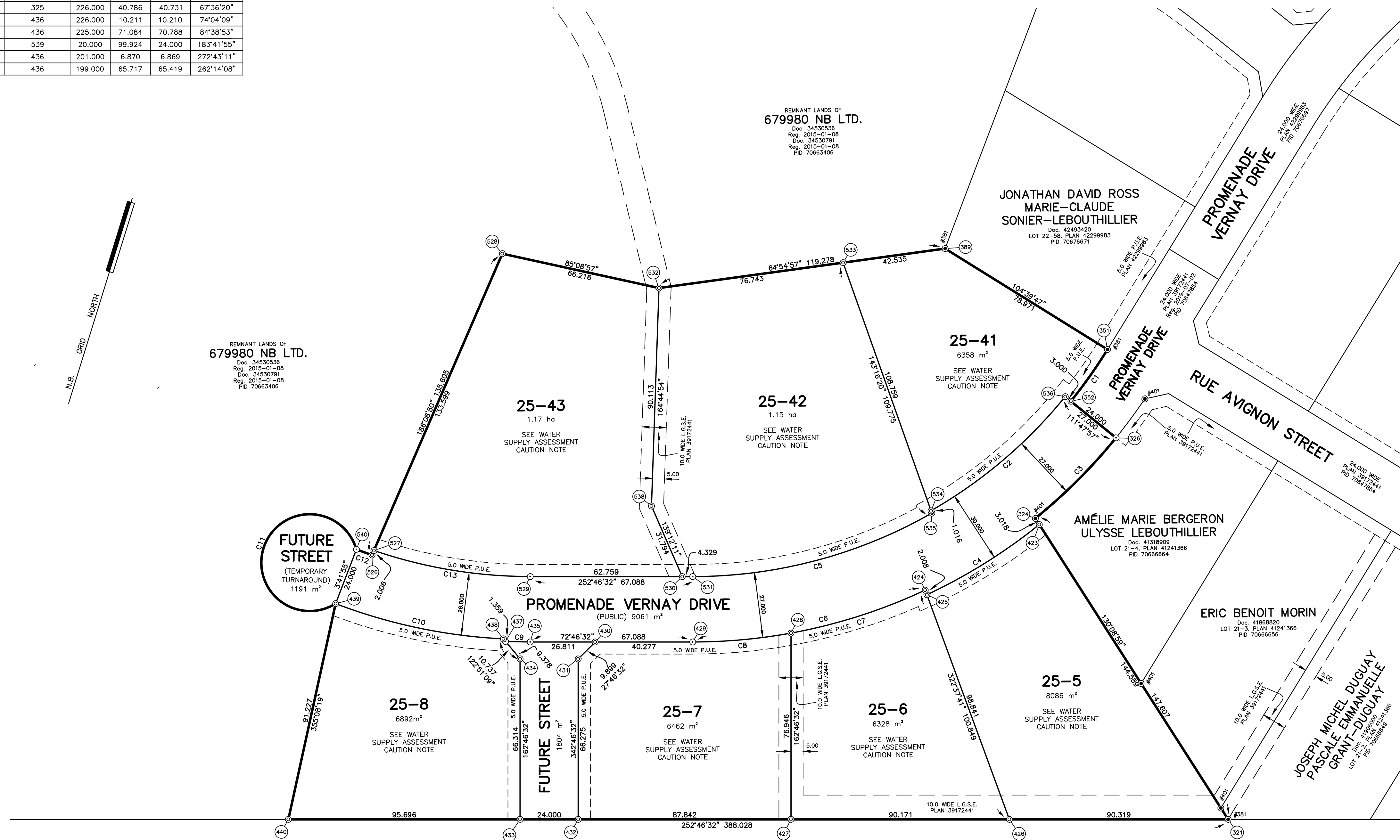


**APPROVALS**

| CURVE TABLE |              |         |         |         |               |         |
|-------------|--------------|---------|---------|---------|---------------|---------|
| CURVE       | RADIUS POINT | RADIUS  | ARC     | CHORD   | CHORD BEARING | AZIMUTH |
| C1          | 325          | 201.000 | 26.180  | 26.161  | 18°04'05"     |         |
| C2          | 325          | 198.000 | 73.192  | 72.776  | 21°23'21"     |         |
| C3          | 325          | 225.000 | 47.191  | 47.105  | 20°48'28"     |         |
| C4          | 325          | 228.000 | 54.846  | 54.714  | 40°47'29"     |         |
| C5          | 325          | 199.000 | 103.308 | 102.152 | 23°54'12"     |         |
| C6          | 325          | 226.000 | 99.150  | 98.357  | 24°01'26"     |         |
| C7          | 325          | 226.000 | 58.364  | 58.202  | 5°02'14"      |         |
| C8          | 325          | 226.000 | 40.786  | 40.731  | 6°36'20"      |         |
| C9          | 436          | 226.000 | 10.211  | 10.210  | 74°04'09"     |         |
| C10         | 436          | 225.000 | 71.084  | 70.788  | 84°38'53"     |         |
| C11         | 539          | 20.000  | 99.824  | 24.000  | 18°34'15"     |         |
| C12         | 436          | 201.000 | 6.870   | 6.869   | 272°43'11"    |         |
| C13         | 436          | 199.000 | 65.717  | 65.419  | 262°14'08"    |         |



REMNANT LANDS OF  
679980 NB LTD.  
Doc. 34530536  
Reg. 2015-01-08  
Doc. 34530791  
Reg. 2015-01-08  
PID 70663406



**A & M CONTRACTING LTD.**  
Doc. 446184, Vol. 956, Pg. 599  
PID 918623

|         |             |             |
|---------|-------------|-------------|
| 321     | 2642387.687 | 7450042.907 |
| 324     | 2642274.861 | 7450138.083 |
| 325     | 2642087.925 | 7450263.303 |
| 326     | 2642296.836 | 7450179.748 |
| 351     | 2642282.666 | 7450213.531 |
| 352     | 2642274.552 | 7450188.660 |
| 389     | 2642206.267 | 7450233.521 |
| 423     | 2642277.168 | 7450136.137 |
| 424     | 2642240.205 | 7450096.309 |
| 425     | 2642241.423 | 7450094.713 |
| 426     | 2642301.418 | 7450016.163 |
| 427     | 2642215.292 | 7449989.461 |
| 428     | 2642192.507 | 7450062.956 |
| 429     | 2642154.848 | 7450047.438 |
| 430     | 2642116.377 | 7450035.512 |
| 431     | 2642111.764 | 7450026.753 |
| 432     | 2642131.389 | 7449963.450 |
| 433     | 2642108.465 | 7449956.343 |
| 434     | 2642088.829 | 7450019.683 |
| 435     | 2642090.769 | 7450027.573 |
| 436     | 2642023.844 | 7450243.436 |
| 437     | 2642080.951 | 7450024.770 |
| 438     | 2642079.809 | 7450025.908 |
| 439     | 2642009.329 | 7450018.905 |
| 440     | 2642017.061 | 7449928.006 |
| 526     | 2642017.739 | 7450042.529 |
| 527     | 2642017.954 | 7450044.523 |
| 528     | 2642032.260 | 7450177.354 |
| 529     | 2642082.773 | 7450053.362 |
| 530     | 2642142.718 | 7450071.946 |
| 531     | 2642146.853 | 7450073.228 |
| 532     | 2642098.239 | 7450182.954 |
| 533     | 2642167.744 | 7450215.489 |
| 534     | 2642232.783 | 7450128.320 |
| 535     | 2642233.391 | 7450127.506 |
| 536     | 2642271.767 | 7450189.774 |
| 538     | 2642121.944 | 7450096.015 |
| 539     | 2641994.137 | 7450031.912 |
| 540     | 2642010.878 | 7450042.855 |
| 28155   | 2628800.997 | 7456492.126 |
| STATION | EASTING     | NORTHING    |

**N.B. GRID COORDINATE VALUES**

ALL COMPUTATIONS PERFORMED AND COORDINATES SHOWN ON THIS PLAN ARE BASED ON THE NEW BRUNSWICK STEREOGRAPHIC DOUBLE PROJECTION AND NAD83 (CSRS) AS REALIZED BY SERVICE NEW BRUNSWICK'S HIGH PRECISION NETWORK ACTIVE CONTROL SYSTEM

NO ONE MAY COPY, REPRODUCE, DISTRIBUTE, OR SELL THIS PLAN WITHOUT THE PERMISSION OF WSP CANADA INC. © 2025

**UTILITIES APPROVAL**

PURSUANT TO SECTION 5 OF "DESIGNATED EASEMENTS REGULATION" 2021-83, THE PUBLIC UTILITY EASEMENTS ON THIS PLAN VEST IN NEW BRUNSWICK POWER CORPORATION, BELL CANADA, AND ROGERS COMMUNICATION INC., WITH THE FILING OF THIS PLAN.

**WATER SUPPLY ASSESSMENT CAUTION NOTE**

BASED ON A HYDROGEOLOGICAL STUDY PREPARED BY CRAIG HYDROGEOLOGIC INC., DATED MARCH, 2013, A RESIDENTIAL WATER TREATMENT UNIT MAY BE REQUIRED TO ENSURE WATER QUALITY WITHIN THE GUIDELINES FOR THE PROTECTION OF CANADIAN DRINKING WATER QUALITY. THIS APPLIES TO EVERY LOT BEING CREATED BY THIS SUBDIVISION.

**DOCUMENTS**

PID 70663406  
RONALD LEGER AND BEVERLY LEGER TO 679980 NB LTD.  
DATED 2014-11-14  
REGISTERED 2015-01-08  
NUMBER 34530536

ALINE POWERS, GERRY POWERS, JOSEPH ROGER POWERS AND MARIE ODETTE POWERS TO 679980 NB LTD.  
DATED 2015-01-08  
REGISTERED 2015-01-08  
NUMBER 34530791

**CRO DATED**

**OWNER'S STATEMENT**

I, THE UNDERSIGNED, DO HEREBY CERTIFY THAT I REPRESENT THE REGISTERED OWNER OF THE PROPERTY BEING SUBDIVIDED HEREON AND DO HEREBY GRANT APPROVAL TO THIS PLAN.

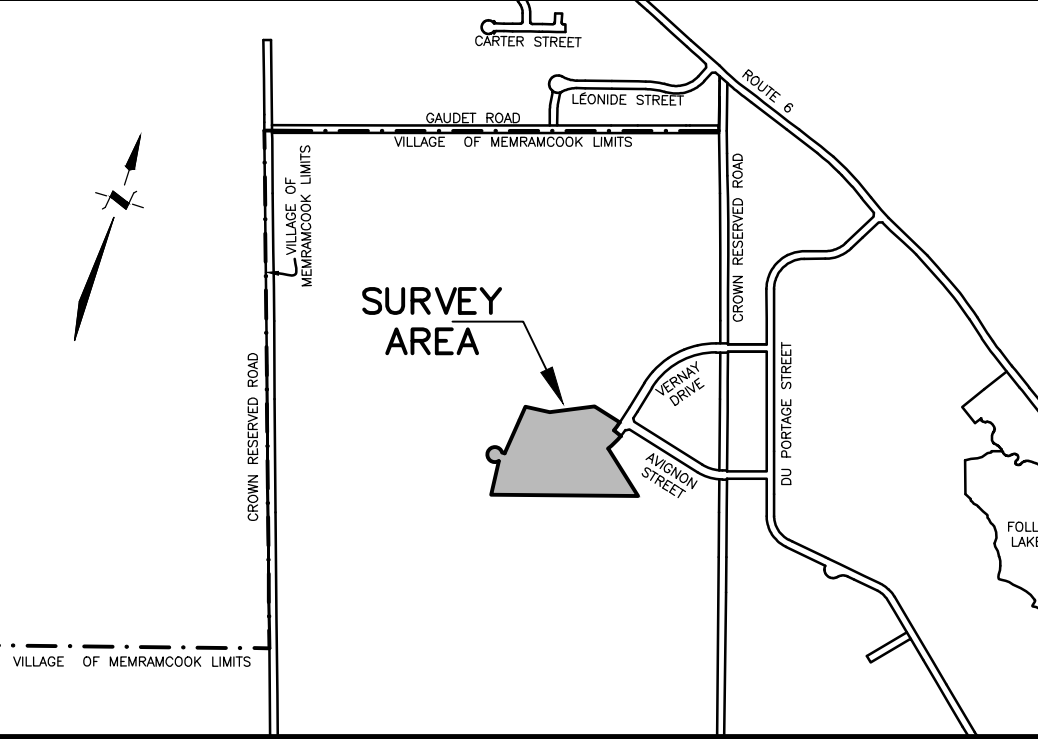
ANDRÉ GUY SAVOIE — PRESIDENT  
FOR: 679980 NB LTD.

**PURPOSE OF PLAN**

—TO CREATE LOTS 25-5, 25-6, 25-7, 25-8, 25-41, 25-42 AND 25-43 FOR RESIDENTIAL BUILDING PURPOSES.  
—TO CREATE PROMENADE VERNAY DRIVE (PUBLIC), AS PURSUANT TO 88(6)(a) OF THE COMMUNITY PLANNING ACT, 2017.  
—TO CREATE A FUTURE STREET, AS PURSUANT TO 88(6)(b) OF THE COMMUNITY PLANNING ACT, 2017.  
—TO CREATE A FUTURE STREET (TEMPORARY TURNAROUND), AS PURSUANT TO 88(6)(b) OF THE COMMUNITY PLANNING ACT, 2017.  
—TO CREATE PUBLIC UTILITY EASEMENTS (P.U.E.) SHOWN THUS ---, PURSUANT TO SECTION 5, REGULATION 2021-83, OF THE COMMUNITY PLANNING ACT.

**NOTES**

—DIRECTIONS ARE N.B. GRID AZIMUTHS DERIVED FROM THE SERVICE NEW BRUNSWICK'S HIGH PRECISION NETWORK ACTIVE CONTROL SYSTEM.  
—THE SCALE FACTOR USED WAS 1.000046.  
—THE DOCUMENT NUMBERS REFERRED TO ON THIS PLAN ARE THOSE OF THE COUNTY REGISTRY OFFICE AND OR THE PROVINCIAL LAND REGISTRATION OFFICE FOR THE DISTRICT OF NEW BRUNSWICK.  
—ADJACENT OWNER INFORMATION OBTAINED FROM SNB RECORDS.  
—AS USED HEREIN, THE WORD CERTIFY SHALL MEAN AN EXPRESSION OF THE CONSULTANT'S PROFESSIONAL OPINION TO THE BEST OF ITS INFORMATION, KNOWLEDGE AND BELIEF, AND DOES NOT CONSTITUTE A WARRANTY OR GUARANTEE BY THE CONSULTANT.  
—ALL DISTANCES SHOWN ARE CALCULATED GRID DISTANCES.  
—CERTIFICATION IS NOT MADE AS TO LEGAL TITLE, BEING THE DOMAIN OF A LAWYER, NOR TO THE ZONING & SETBACK BY-LAWS OR REGULATIONS, BEING THE DOMAIN OF A DEVELOPMENT OFFICER.  
—FIELD SURVEY WAS COMPLETED, 2025.



**LOCALITY SKETCH**

**LEGEND**

| DESCRIPTION                         | SYMBOL   | DESCRIPTION                                                  | SYMBOL         |
|-------------------------------------|----------|--------------------------------------------------------------|----------------|
| SURVEY SYSTEM COORDINATE MONUMENT   | ▲        | FOUND                                                        | Fd             |
| STANDARD SURVEY MARKER PLACED       | ⊙        | CALCULATED                                                   | (C)            |
| STANDARD SURVEY MARKER FOUND        | ⊗        | REGISTERED                                                   | Reg.           |
| CALCULATED COORDINATE POINT         | ⊙        | DERIVED FROM A SOURCE OTHER THAN THE SURVEYOR'S MEASUREMENTS | (d)            |
| TABULATED COORDINATE REFERENCE      | ⊙        | NBLS REGISTRATION NUMBER                                     | #364           |
| SCRIBED WOODEN SURVEY POST          | ⊠        | SQUARE METRE(S)                                              | m <sup>2</sup> |
| WOODEN SURVEY POST                  | ⊠        | MILLIMETRE(S)                                                | mm             |
| SQUARE IRON BAR FOUND               | ⊠        | HECTAIRE                                                     | ha             |
| IRON PIPE FOUND                     | ⊠        | RADIUS                                                       | R              |
| ROUND IRON BAR FOUND                | ⊠        | DERIVED FROM PLAN                                            | (plan)         |
| DISTANCE/AZIMUTH CALLED FOR IN Doc. | (deed)   | NEW BRUNSWICK LAND SURVEYOR                                  | NBLS           |
| PUBLIC UTILITY EASEMENT             | P.U.E.   | CERTIFICATE OF REGISTERED OWNERSHIP                          | CRO            |
| LOCAL GOVERNMENT SERVICES EASEMENT  | L.G.S.E. | SERVICE NEW BRUNSWICK                                        | SNB            |
| EASEMENT(S) SHOWN THUS              | ---      | DOCUMENT / VOLUME / PAGE                                     | Doc./Vol./Pg.  |
| CIVIC # SUPPLIED BY MUNICIPALITY    | [123]    | BARCEL IDENTIFIER                                            | PID            |
| LANDS DEALT WITH BY THIS PLAN       | OR       | OBSERVED                                                     | OBS            |
|                                     |          | ORDINARY HIGH WATER MARK                                     | OHWM           |

**PHASE 3 SUBDIVISION PLAN:**

**LAC FOLLY OUEST SUBDIVISION**

SITUATED AT THE WEST END OF PROMENADE VERNAY DRIVE, VILLAGE OF MEMRAMCOOK, PARISH OF DORCHESTER, COUNTY OF WESTMORLAND, PROVINCE OF NEW BRUNSWICK

SCALE 1:1000



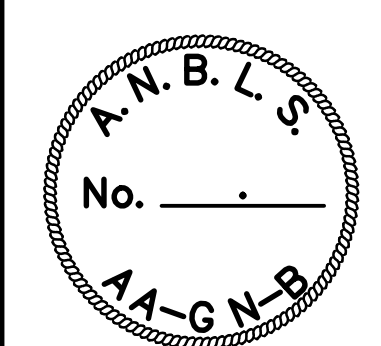
1070 ST. GEORGE BOULEVARD, SUITE 160  
MONCTON, NEW BRUNSWICK  
CANADA, E1E 4K7  
PHONE: 506 857 6775  
WWW.WSP.COM

**SURVEYOR'S STATEMENT**

I HEREBY CERTIFY THAT THIS PLAN IS CORRECT.



**VALIDATION SEAL**



DRAWN: NJB

FIELD: -

CHECKED: BMM

JOB: CA0025812

CAD: CA0025812-621